

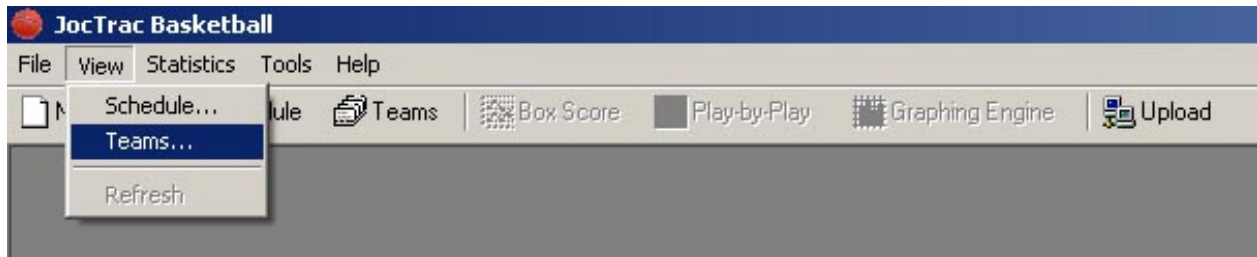
# How do I get JocTrac statistics on my website?

1. Follow the instructions below to find your team's serial number. If you already know your serial number you can skip to Step 2. If you do not know your serial number, cannot find it, or do not have access to the JocTrac Basketball application please contact JocTrac.

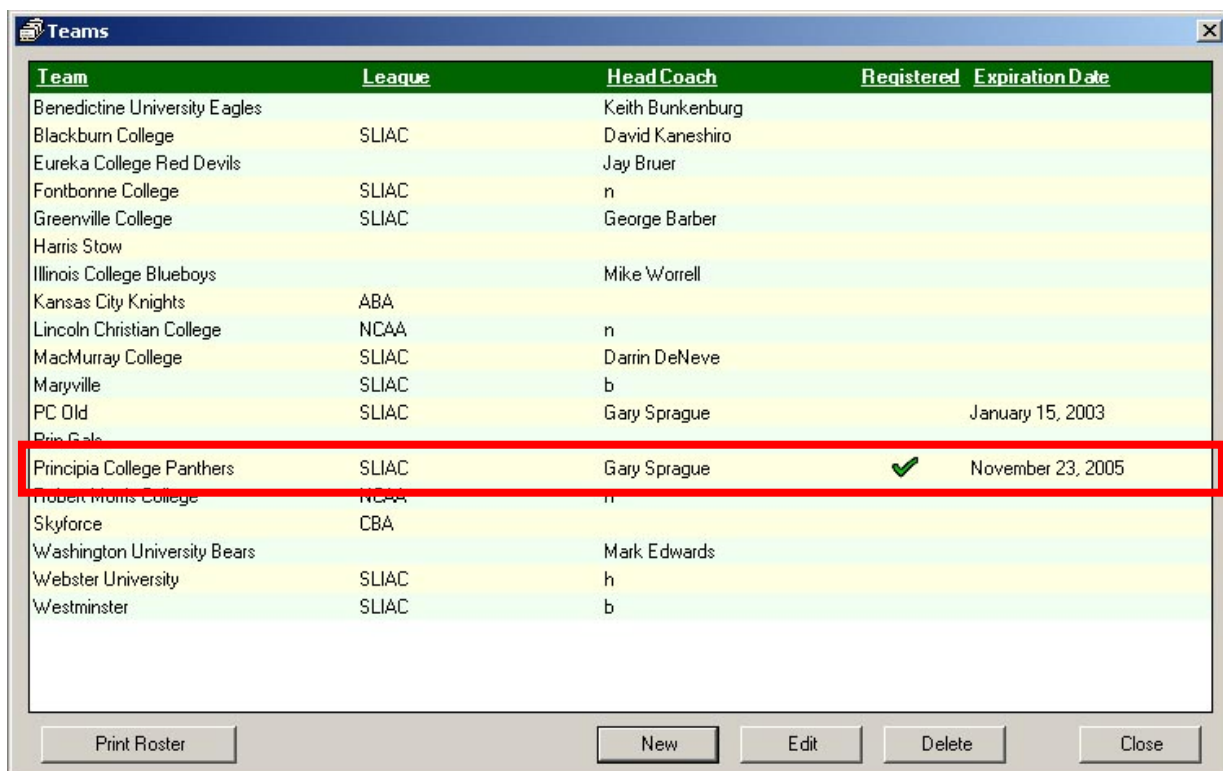
a) In JocTrac Basketball open the list of teams.



or



b) Choose to edit the registered team. If you do not have a registered team, you must complete the registration process before proceeding.



Team	League	Head Coach	Registered	Expiration Date
Benedictine University Eagles		Keith Bunkenburg		
Blackburn College	SLIAC	David Kaneshiro		
Eureka College Red Devils		Jay Bruer		
Fontbonne College	SLIAC	n		
Greenville College	SLIAC	George Barber		
Harris Stow				
Illinois College Blueboys		Mike Worrell		
Kansas City Knights	ABA			
Lincoln Christian College	NCAA	n		
MacMurray College	SLIAC	Darrin DeNeve		
Maryville	SLIAC	b		
PC Old	SLIAC	Gary Sprague		January 15, 2003
Principia College Panthers	SLIAC	Gary Sprague	✓	November 23, 2005
Robert Morris College	NCAA	n		
Skyforce	CBA			
Washington University Bears		Mark Edwards		
Webster University	SLIAC	h		
Westminster	SLIAC	b		

c) Get the serial number from the bottom of the team tab.

The screenshot shows a web application window titled "Principia College Panthers". It has two tabs: "Team" (selected) and "Players". The "Team Information" section contains the following fields:

- Team Name: Principia College Panthers
- Team Abbreviation: Prin
- Head Coach: Gary Sprague
- Assistant Coaches: Ken Beeman
- Contact: (empty)
- Phone: (empty)
- Email: (empty)
- Website: www.prin.edu
- Zipcode: (empty)
- Country: (empty)
- Level: College
- Gender: Male
- Game Settings: College
- Current Season: 2004-2005
- League: A tree view showing ABA, CBA, NCAA, SLIAC (selected), and Independent.
- Export ID: PC
- Web Code: princol

The "Serial Number" field is circled in red and contains the value "011E30L446LPPUQ02".

At the bottom, there is a "Registration" status: "Expired Wednesday, November 23, 2005". Buttons for "Print Roster", "OK", and "Cancel" are also visible.

## 2. On your website create a webpage and insert the following code...

a) Replace [SERIAL NUMBER] with your serial number from step 1.

```
...
<table style="background:#000000; border-style:solid; border-color:#999999; border-width:1px" cellpadding="0" cellspacing="0">
<tr>
<td>
<object classid="clsid:d27cdb6e-ae6d-11cf-96b8-444553540000"
codebase="http://fpdownload.macromedia.com/pub/shockwave/cabs/flash/swflash.cab#version=8,0,0,0" width="620" height="950"
id="index" align="middle">
<param name="allowScriptAccess" value="sameDomain" />
<param name="movie" value="http://www.joctrac.com/clients/flash/index.swf?sn=[SERIAL NUMBER]" />
<param name="flashvars" value="sn=[SERIAL NUMBER]" />
<param name="quality" value="high" />
<param name="wmode" value="transparent" />
<embed src="http://www.joctrac.com/clients/flash/index.swf?sn=[SERIAL NUMBER]" flashvars="sn=[SERIAL NUMBER]"
quality="high" wmode="transparent" width="620" height="950" name="index" align="middle" allowScriptAccess="sameDomain"
type="application/x-shockwave-flash" pluginspage="http://www.macromedia.com/go/getflashplayer" />
</object>
</td>
</tr>
</table>
...
```