

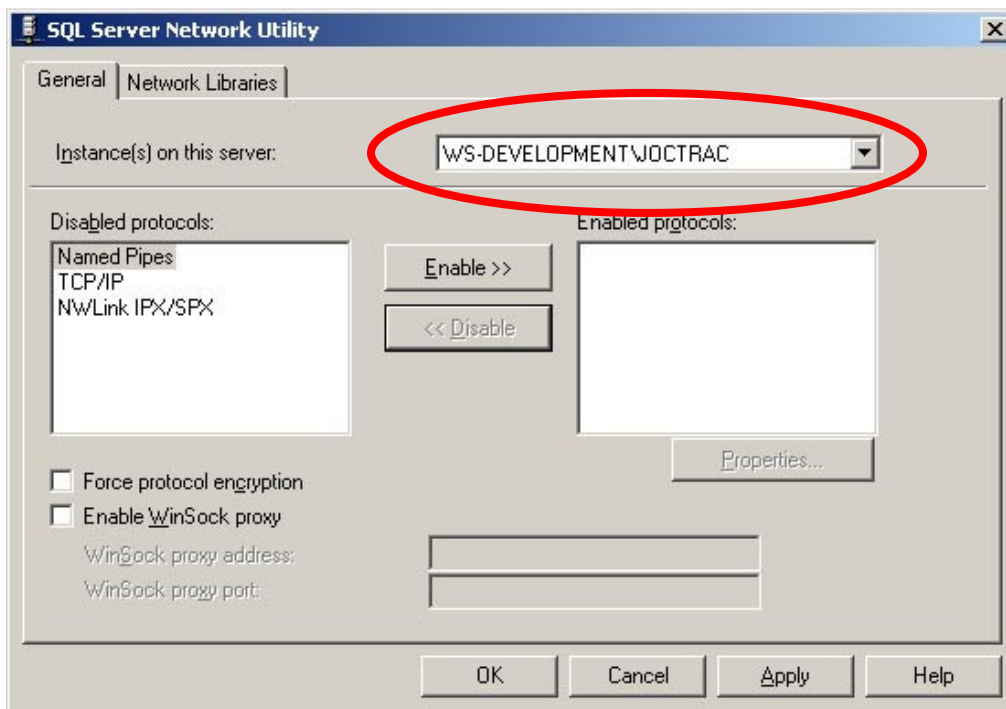
How to Setup a Courtside Network

1. Enable remote access to the JocTrac database.

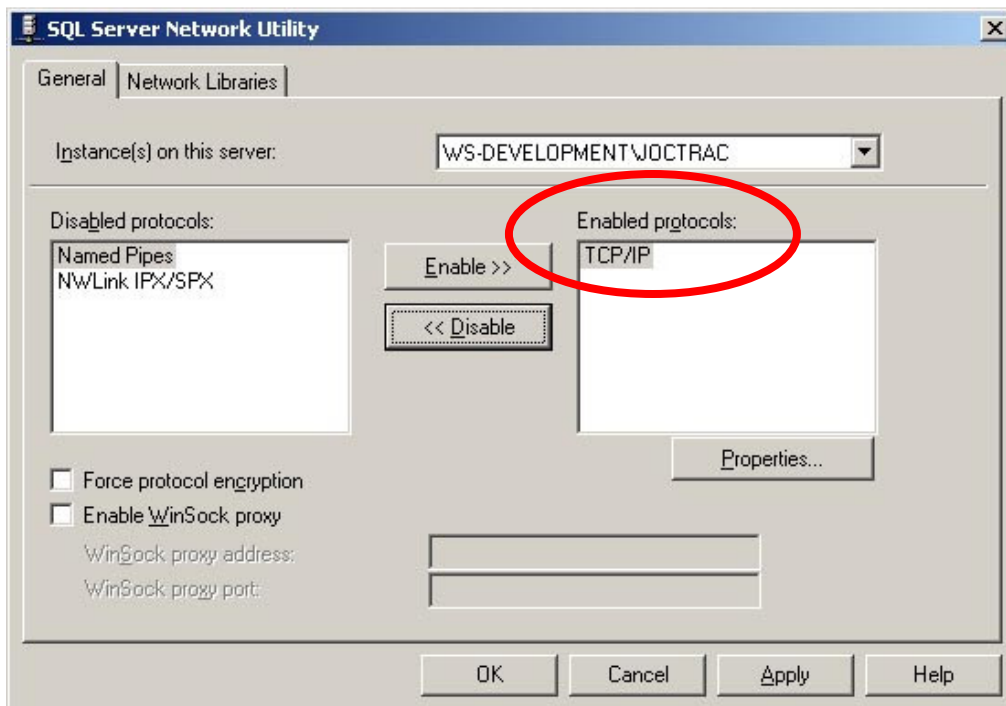
a) Open the 'SQL Server Network Utility' on the computer which is running JocTrac Basketball.

- The default location is C:\Program Files\Microsoft SQL Server\80\Tools\Binn\svrnetcn.exe.

b) Select the JocTrac database, the default name is '[ComputerName]\JOCTRAC'.

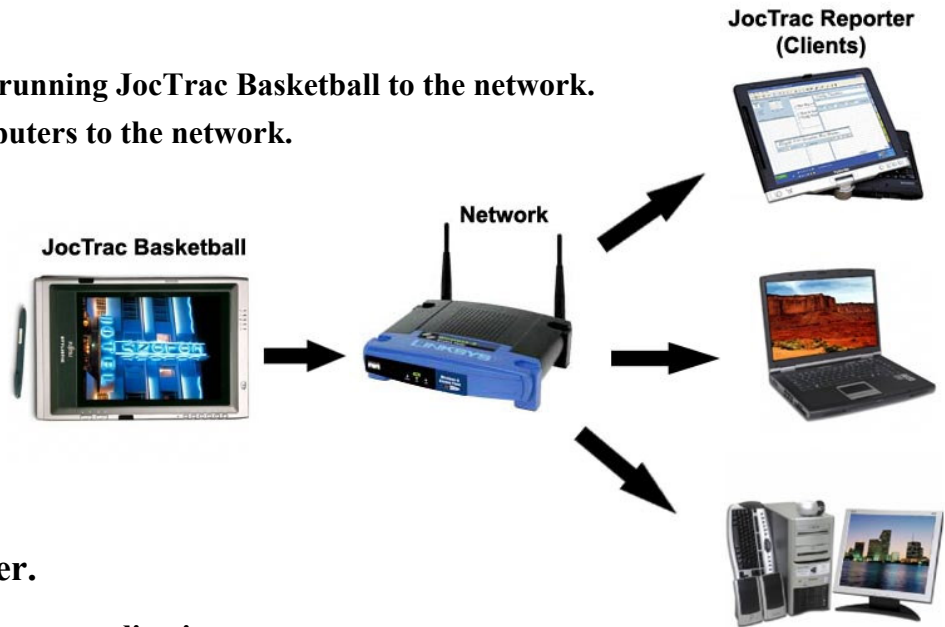


c) Enable the TCP/IP protocol, click 'OK', and restart the computer.



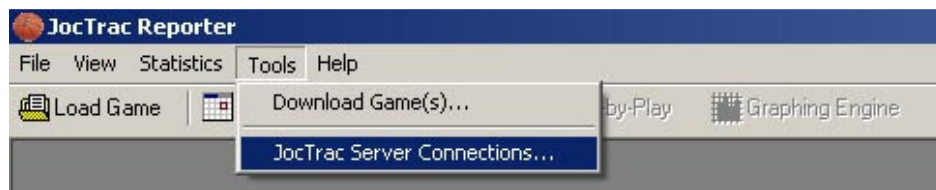
2. Setup the Network.

- Connect the computer running JocTrac Basketball to the network.
- Connect all client computers to the network.



3. Setup the client computer.

- Open the JocTrac Reporter application.
- The JocTrac Reporter application will automatically try to re-establish the last known connection.
- If no connection is found, the application will search the network for any available connections and prompt you to connect if one is found.
- To manually change the server connection, open the JocTrac Server Connection window.



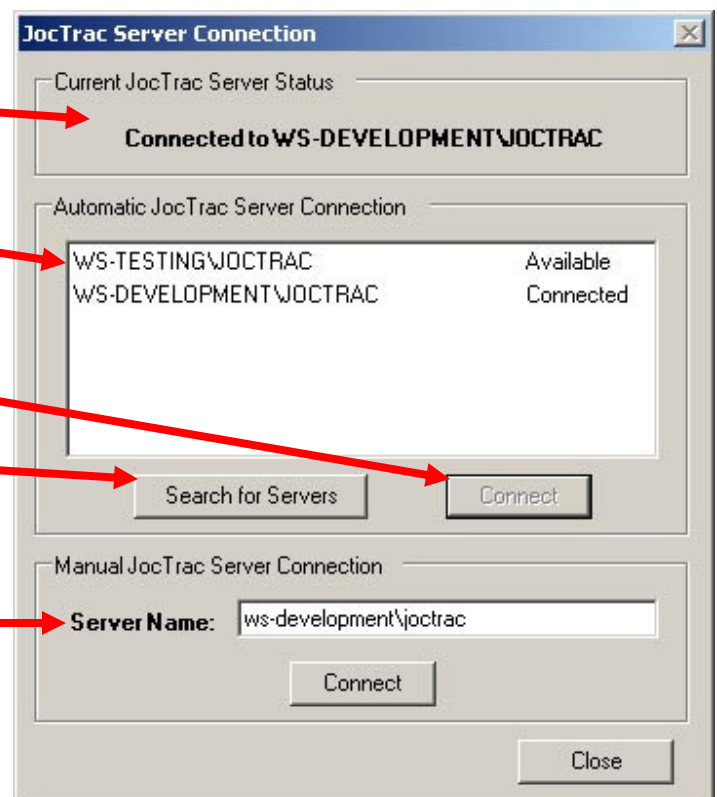
Current connection status

This window displays all available JocTrac servers on the network.

Click to connect to the selected server.

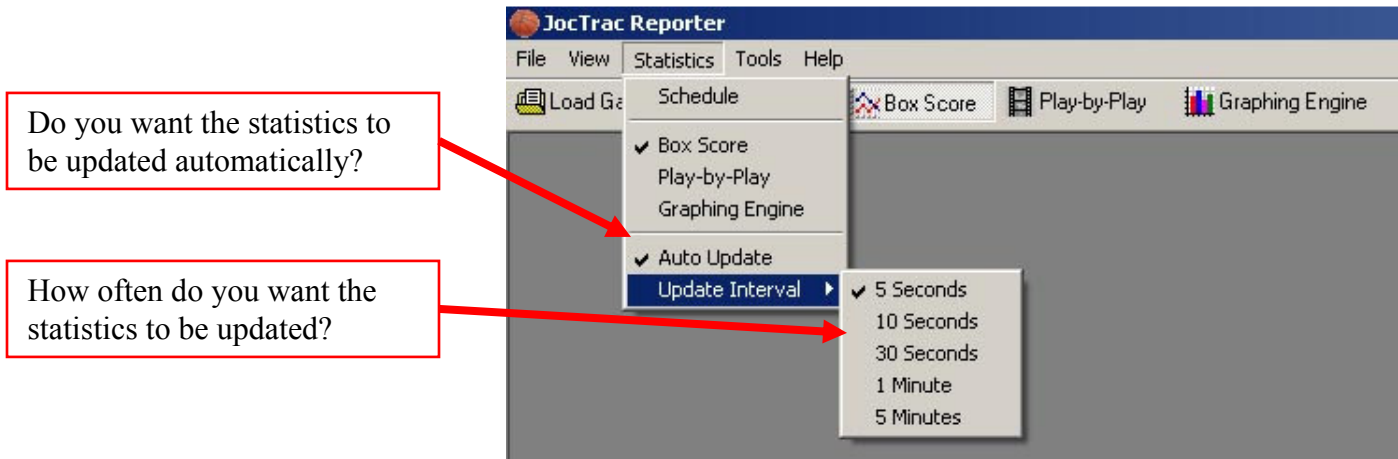
Click to refresh the server list.

Manual Connection: Enter the name of the JocTrac database instance and click 'Connect'. The default instance name is '[ComputerName]/JOCTRAC'



e) Once connected to a JocTrac server, choose the game you want to view by opening the schedule and selecting the game.

f) By default, the client will be automatically updated every five seconds. If you would like, you can modify how the client is updated.



g) The statistics will be updated automatically as soon as the game begins.