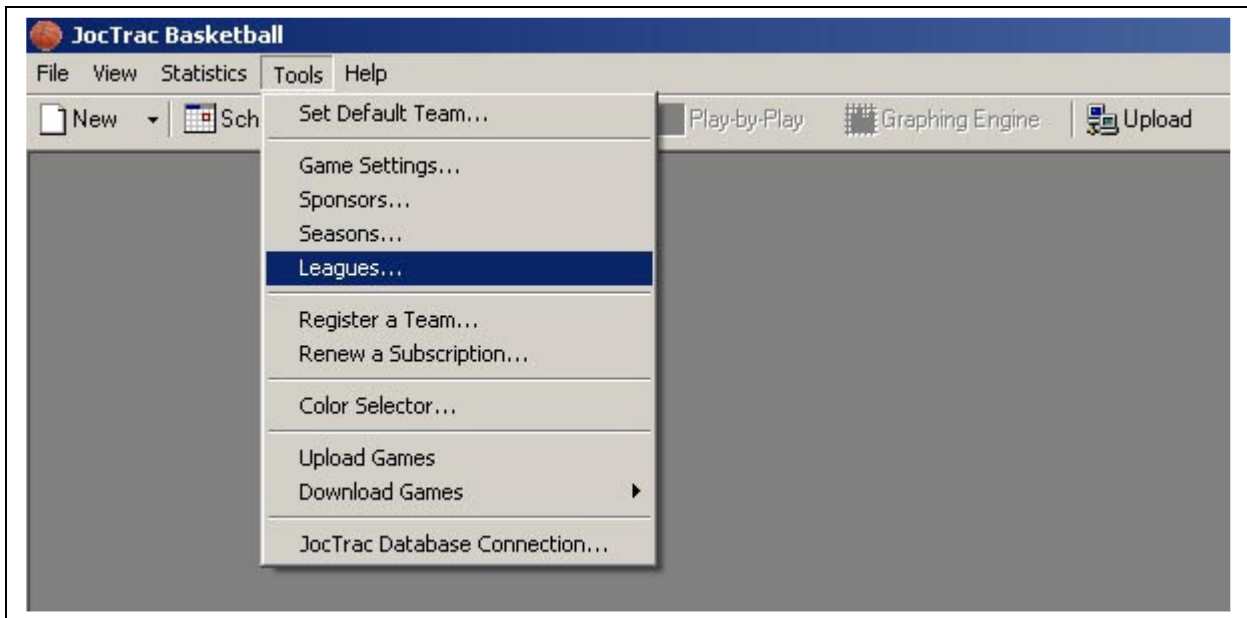
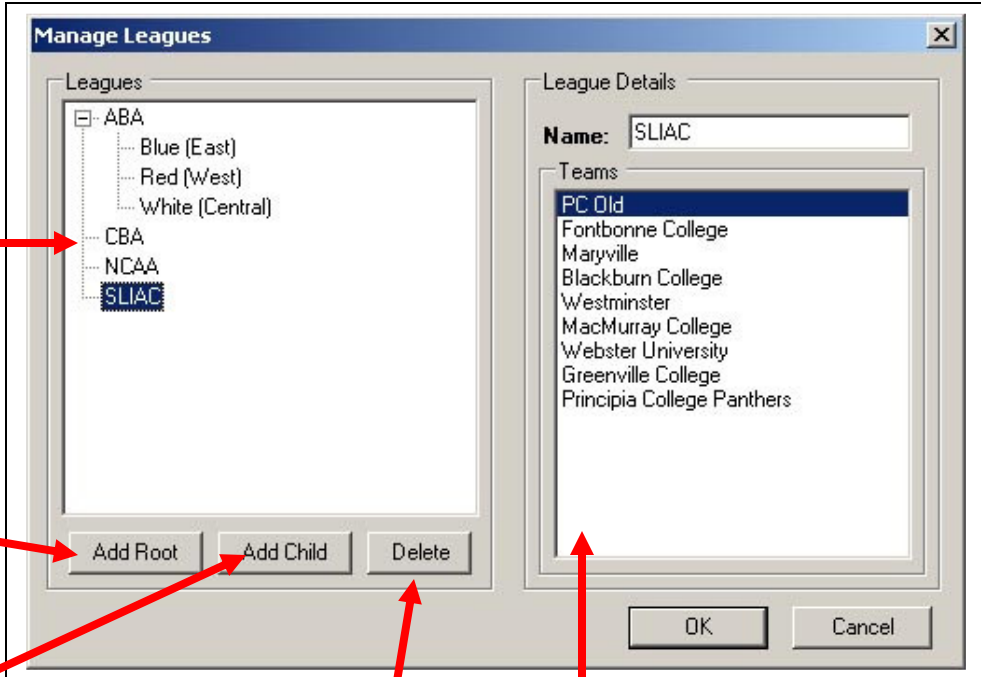


League Management

1. Open the league management window.



2. Make the changes you need and click 'OK'.



List of all leagues, leagues are structured as a hierarchical parent-child relationship. There is no limit to the depth or breadth of the league structure.

The 'Add Root' button adds a new league at the root (top) level.

The 'Add Child' button adds a new league under the selected league.

The 'Delete' button deletes the selected league and all of its child leagues.

A list of the teams in the selected league or in the selected league's child leagues.

The 'Manage Leagues' dialog box features a tree view on the left showing a hierarchy: ABA (expanded) with sub-items Blue (East), Red (West), and White (Central); CBA; NCAA; and SLIAC (selected). Below the tree are buttons for 'Add Root', 'Add Child', and 'Delete'. On the right, the 'League Details' section shows 'Name: SLIAC' and a list of teams: PC Old (selected), Fontbonne College, Maryville, Blackburn College, Westminster, MacMurray College, Webster University, Greenville College, and Principia College Panthers. 'OK' and 'Cancel' buttons are at the bottom right.