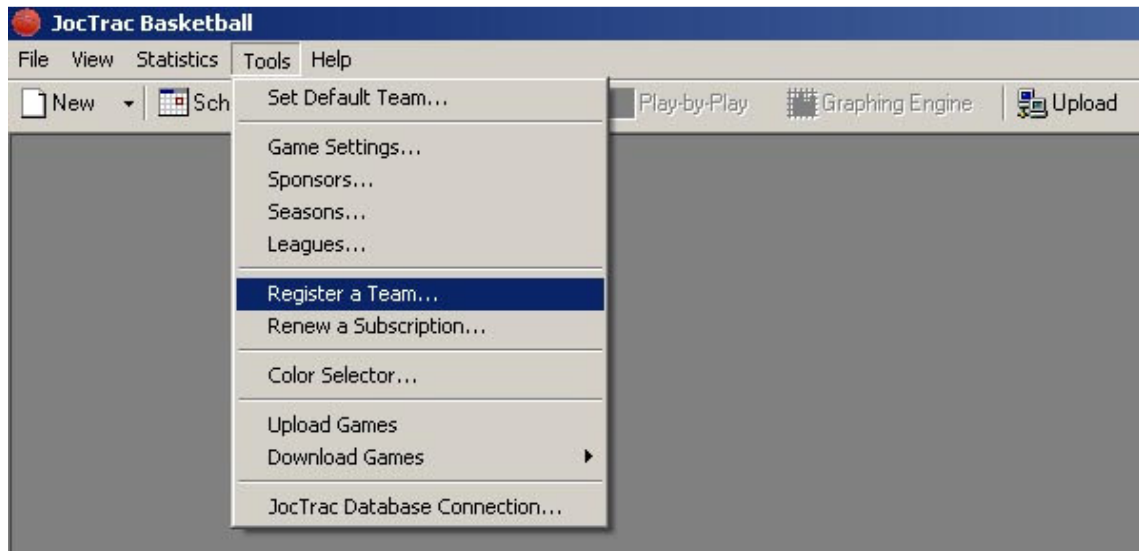


Registration

1. Open the registration form.

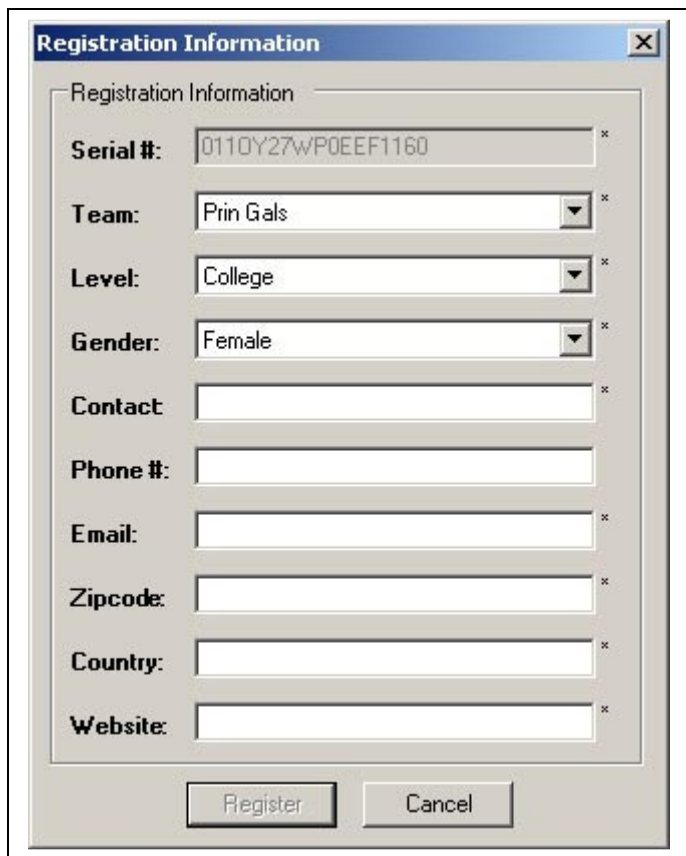


2. Enter your serial number. If you do not have a serial number you can purchase one from JocTrac.com.



3. If your serial number starts with the number '0' go to step #4. If your serial number starts with the number '1' go to step #7.

4. Select the team you want to register, provide the required information, and click 'Register'.



The 'Registration Information' dialog box contains the following fields and options:

- Serial #:** 0110Y27WP0EEF1160 *
- Team:** Prin Gals *
- Level:** College *
- Gender:** Female *
- Contact:** *
- Phone #:** *
- Email:** *
- Zipcode:** *
- Country:** *
- Website:** *

Buttons: Register, Cancel

5. Click 'Start Upload' to put the new information on the website.



The 'Upload' dialog box displays the following information:

- Upload Status:** 
- Connecting to Server**
- Validating Subscription(s)**
- Performing Maintenance**
- Seasons**
- Leagues**
- Teams**
- Players**
- Games**
- Events**

Status: _____

Buttons: Start Upload, Cancel

6. The registration process is complete.

7. Your team was created by the league administrator and has been downloaded.

8. You may download any of your games...